

**3537** primeplus

\$25.00 QCCC Bling Design

**LAT Ladies' Football T-Shirt**

MSRP (A): \$12.66

**Features**

- Topstitched ribbed v-neck collar
- Self-fabric back neck tape
- Coverstitched front and back yoke
- Contrast topstitched self-fabric sleeve stripes
- Double needle sleeves and bottom hem
- Side seam construction
- EasyTear™ label
- Machine washable/ tumble dry low
- Fit: Ladies' Modern - Semi-Fitted
- Note: Color descriptions indicate Body and Sleeves/Stripe colors, e.g. Vintage Red/Blended White indicates Vintage Red shirt with Blended White sleeve stripes.

**Fabric**

- 4.5 oz., 100% combed ringspun cotton fine jersey
- CVC Colors are 60/40 combed ringspun cotton/polyester

**Sizes**

- S - 2XL



**Product Specifications**

	S	M	L	XL	2XL
<b>BODY LENGTH</b>	25	26	27	28	29.5
<b>BODY WIDTH</b>	18	19	21	23	25
<b>SLEEVE LENGTH</b>	6.5	6.75	7	7.25	7.5



Black/ White



Gran Hth/ Vn Smk



Nat Hth/ Gran Ht



V Ht Pnk/ Bd Wht



Vn Brgndy/ Bl Wh



Vn Camo/ Vn Smk



White/ Black



Vn Hthr/ Bld Wht



Vn Navy/ Bld Wht



Vn Orange/ Bd Wh



Vn Purp/ Bld Wh



Vn Red/ Bld Wht



Vn Green/ Bd Wht



Vn Royal/ Bd Wht



Vn Smoke/ Bd Wht

# LW701

# \$32.00

## Port Authority® Ladies 3/4-Sleeve Tunic Blouse.

Transition seamlessly from professional life to play in this comfortable and flattering tunic blouse.

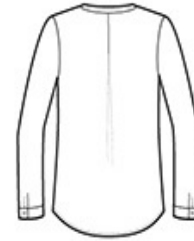
- 4.1-ounce, 100% polyester crepe
- Split v-neck
- Roll sleeves with button tabs
- Longer tunic length
- Gathered back detail

### CARE INSTRUCTIONS

Turn inside out, machine wash cold, gentle cycle, with like colors, only non-chlorine bleach, if needed, tumble dry low, cool iron, if necessary.



front

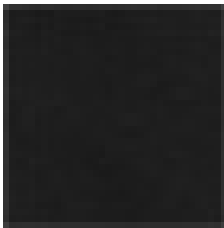


back

## COLOR INFORMATION

### SIZE CHART

	XS	S	M	L	XL	XXL	3XL	4XL
Size	2	4/6	8/10	12/14	16/18	20/22	24/26	28/30
Bust	32-34	35-36	37-38	39-41	42-44	45-47	48-51	52-55



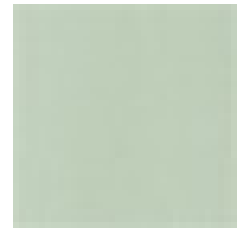
Black



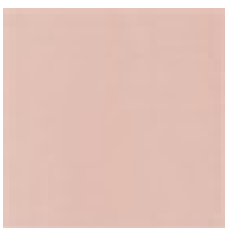
Deep Olive



Ivory Chiffon



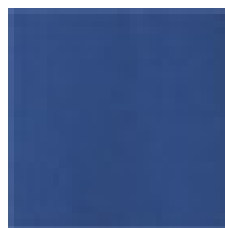
Misty Sage



Rose Quartz



Sterling Grey



True Blue



True Navy

LNEA200 \$23.00



New Era® Ladies Series Performance Scoop Tee. LNEA200



With sport-inspired good looks, this tee beats moisture with unrivaled softness.

- 4-ounce, 100% polyester jersey with moisture-wicking and odor-fighting performance
- Heat transfer label for tag-free comfort
- Embossed New Era neck taping
- Modified raglan sleeves
- New Era flag logo heat transfer on left sleeve
- Underarm gussets
- Side gussets
- Scalloped hem

**CARE INSTRUCTIONS**

Machine wash cold with like colors. Do not use softeners. Tumble dry low. Remove promptly. Only non-chlorine bleach when needed. Cool iron if necessary. Do not dry clean.



front

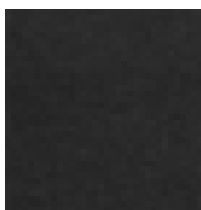


back

**SIZE CHART**

	XS	S	M	L	XL	2XL	3XL	4XL
Size	2	4/6	8/10	12/14	16/18	20/22	24/26	28/30
Bust	32-34	35-36	37-38	39-41	42-44	45-47	48-51	52-55

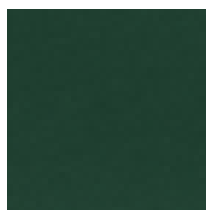
**COLOR INFORMATION**



Black Solid



Crimson



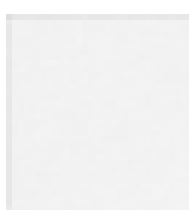
Dark Green



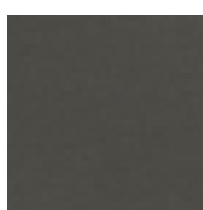
Deep Orange



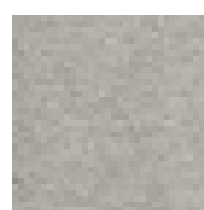
True Navy



White Solid



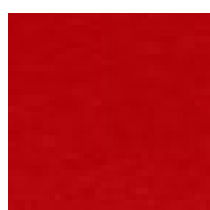
Graphite



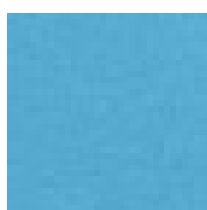
Rainstorm Grey



Goldenrod



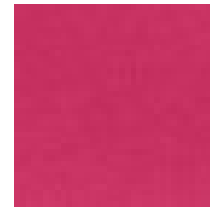
Scarlet



Sky Blue



Royal



Deep Pink

**PORT AUTHORITY** L5430  
**\$28**

Port Authority® Ladies Concept Knit Cardigan. L5430



Created from super soft jersey knit, this layerable cardigan fights indoor chill and instantly upgrades any corporate look.

- 4.4-ounce, 62/33/5 poly/rayon/spandex jersey knit
- Open front
- Shawl collar
- Slightly sloping front hem

**CARE INSTRUCTIONS**

Machine wash cold on gentle cycle, tumble dry low, do no bleach, warm iron if necessary.

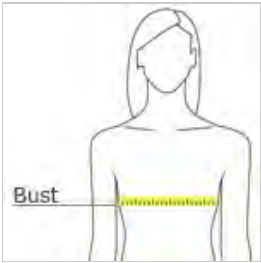


front



back

**HOW TO MEASURE**



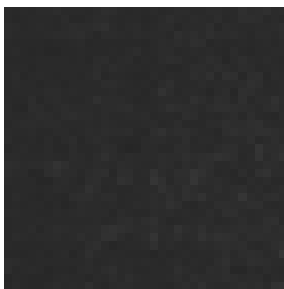
**BUST**

With arms down at sides, measure around the upper body, under arms and around the fullest part of the bust.

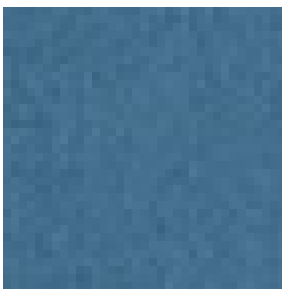
**SIZE CHART**

	XS	S	M	L	XL	XXL	3XL	4XL
Size	2	4/6	8/10	12/14	16/18	20/22	24/26	28/30
Bust	32-34	35-36	37-38	39-41	42-44	45-47	48-51	52-55

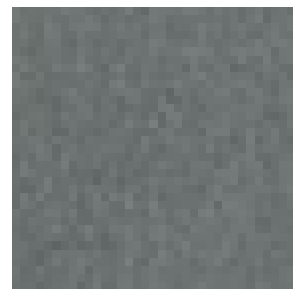
**COLOR INFORMATION**



Black



Dusty Blue



Grey Smoke



District® Women's Perfect Blend® V-Neck Tee. DM1190L



Totally perfect blend of cotton and poly.

- 4.3-ounce, 50/50 combed ring spun cotton/poly, 30 singles
- 90/10 combed ring spun cotton/poly (Light Heather Grey)
- 1x1 rib knit neck
- Shoulder to shoulder taping

Please note: This product is transitioning from woven labels to tear-away labels. Your order may contain a combination of both labels.

CARE INSTRUCTIONS

Machine wash cold. Tumble dry low. Do not bleach. Cool iron when necessary.



front

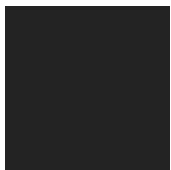


back

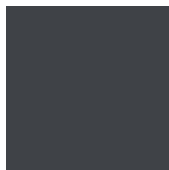
SIZE CHART

	XS	S	M	L	XL	XXL	3XL	4XL
Size	2	4/6	8/10	12/14	16/18	20/22	24/26	28/30
Chest	32-34	35-36	37-38	39-41	42-44	45-47	48-51	52-55

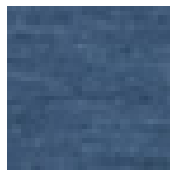
COLOR INFORMATION



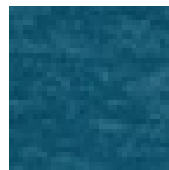
Black



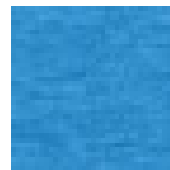
Charcoal



Deep Royal Fleck



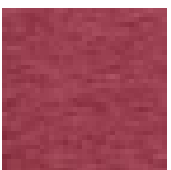
Deep Turquoise Fleck



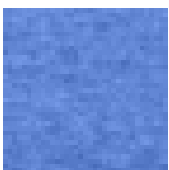
Heathered Bright Turquoise



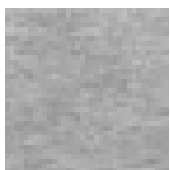
Heathered Charcoal



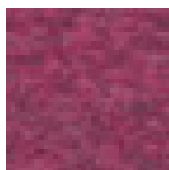
Heathered Red



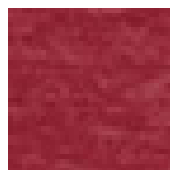
Heathered Royal



Light Heather Grey



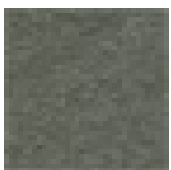
Raspberry Fleck



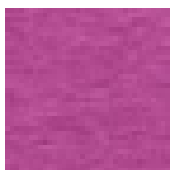
Red Fleck



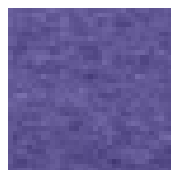
Rose Fleck



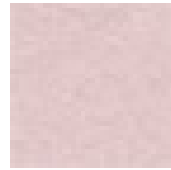
Heathered Olive



Heathered Pink Raspberry



Heathered Purple



Heathered Lavender



Heathered Navy



White

# PRODUCT DETAILS

D997-W

\$58 with QCCC logo

DEVON & JONES®



BACK VIEW



SIDE VIEW

## D997W

### Devon & Jones Ladies' Soft Shell Colorblock Jacket

MSRP (A): \$70.00

#### Features

- Interior storm flap with chin guard
- Open hem with dropped back bottom
- Open hem cuffs
- Set-in sleeves
- Zipper front pocket
- Feminine fit

#### Fabric

- 9.5 oz./yd<sup>2</sup> / 320 gsm, 3-Layer 96% polyester, 4% spandex bonded to polyester microfleece with inner membrane
- 10,000 mm waterproof rating
- 96% polyester, 4% spandex bonded to 100% polyester microfleece
- Wind- and water-resistant

#### Sizes

- S - 2XL

#### Product Specifications

	S	M	L	XL	2XL
BODY LENGTH	24.5	25.5	26.5	27.5	28.5
BODY WIDTH	20.5	21.5	23	24.5	26
FULL BODY LENGTH	24.5	25.5	26.5	27.5	28.5
SLEEVE LENGTH	31.5	32	33	33.75	34.5

#### Size Chart

	S	M	L	XL	2XL
CHEST	35-38	39-41	42-45	46-49	50-52



Black/Dark Charcoal

## 4 Available Colors



Blck/ Dk  
Chrcoal

**PMS**  
blkc, 7540c



Charcl/ Dk  
Chrcl

**PMS**  
424c, 7540c



Navy/ Dk  
Chrcoal

**PMS**  
532c, 7540c



Red/ Dk  
Charcoal

**PMS**  
187c, 7540c

# 5099 WOMEN'S NEW ENGLANDER RAIN JACKET

WOMEN'S SIZES XS-3XL (Black, Navy, Grey and Aqua available in XS-5XL)

- :: Wind & waterproof with heat-sealed seams
- :: New Englander Polyurethane bonded to a woven backing for added fabric strength
- :: Also available in Men's, Youth, Children's, & Toddler sizes

## \$45 with QCCC logo or Monogram

Mint shown



Grey, mesh-lined body for breathability with taffeta nylon lining in sleeves for easy on/off

Hood and hem with adjustable shockcord drawstrings

Heat-sealed seams throughout to seal out wind and rain

Front vented capes provide easy decorating access

Reflective stripe accents on front & back for safety and style

Adjustable cuffs

Attractive, A-line styling

Covered zippered side pockets



BACK VIEW

154 BUTTERCUP +REFLECTIVE

166 RED +REFLECTIVE

188 PINK +REFLECTIVE

192 WAVE +REFLECTIVE

210 BLACK +REFLECTIVE

236 AQUA +REFLECTIVE

256 CORAL +REFLECTIVE

263 TRUE NAVY +REFLECTIVE

323 MINT +REFLECTIVE

334 HOT PINK +REFLECTIVE

353 VIOLET +REFLECTIVE

352 PERIWINKLE +REFLECTIVE

316 GREY +REFLECTIVE

434 MAUVE +REFLECTIVE



NEW ENGLANDER RAIN JACKET WOMEN'S 5099	XS	S	M	L	XL	2XL	3XL	4XL	5XL	TOLERANCE
BODY LENGTH measure from CB neck	27 ¼	27 7⁄8	28 ¾	29 ¼	30 1⁄8	30 7⁄8	32 1⁄8	32 ¾	33 1⁄8	¾ +/-
BODY WIDTH measure from Chest 1" down 1/2	19	20	21	22 ½	24	26	28	30	32	¾ +/-
BOTTOM OPENING WIDTH EXTENDED 1/2	21 ½	22 ½	23 ½	25	26 ½	28 ½	30 ½	32 ½	34 ½	¾ +/-
SLEEVE LENGTH FROM CB	32 ¼	32 ¾	33 ¼	33 ¾	34 ¼	34 ¾	35 ¼	35 ¾	36 ¼	¼ +/-